



INDOOR FACILITY COVID-19 PROTOCOLS & PROCEDURES

FACILITY: WSF SOCCER SOUTH & WSF SOCCER NORTH

FACILITY PROTOCOLS & PROCEDURES ARE IN EFFECT UNTIL FURTHER NOTICE
AND ARE MANDATORY FOR ENTRY AND USE OF WSF FACILITIES

PROOF OF IMMUNIZATION & IDENTIFICATION

ADULTS (18 years of age or older)

- To enter the facility, the following is required:
 - ⇒ All adults (18 years of age or older) must present a scannable immunization QR code or card along with government issued photo identification.
 - ⇒ Other immunization records will be accepted if approved by the Province of Manitoba. Please verify that you have the correct documentation prior to arriving at the facility.

YOUTH (12-17 years of age)

- To enter the facility, the following is required:
 - ⇒ All youth (12-17 years of age) must provide proof that they have received at least one dose of a Pfizer-BioNTech or Moderna COVID-19 vaccine or proof of a pharmacist-confirmed negative result from an approved rapid antigen test within 72 hours of the activity. Public health orders do not allow other health care providers to confirm a test result.
 - ⇒ Youth must also provide proof of identification. Acceptable government issued ID includes driver's licences, provincial health cards, passports, status cards, permanent resident cards, citizenship cards, social insurance cards and birth certificates. Students may also use school-issued student ID cards.
 - ⇒ Youth under 12 who appear older should be prepared to present photo identification if asked for proof of age.

MASKS

- You must wear a mask upon entry to the facility and at all times within the facility (exceptions are noted below.)
- Masks may be removed once on the field and during play. You must re-apply your mask prior to leaving the field area and it is to be worn until you have fully exited the facility.
- Your member organization may require masks to be worn at other times while on the field. Check with your organization for their full policies and adhere accordingly.
- Spectators must wear their mask at all times unless they are consuming food or beverages. Intervals when masks are removed must be short and masks re-applied as much as possible. You may be asked to re-apply your mask if intervals are too long.

PLAYERS AND GAME PERSONNEL

- If you arrive early for your game, proceed to the concourse until it is closer to your game time.
- At field level, use the designated waiting areas at each field until the current game has concluded and everyone has exited the bench area. Refer to the map at field level and signs on the walls to indicate these areas.

SPECTATORS

- **Due to the limit on allowable facility capacity, only ONE spectator is permitted per player.**
- Spectators are not allowed at field level and should remain on the concourse.
- Do not congregate in the main lobby at any time.

CHANGE ROOMS & BELONGINGS

- Dressing rooms will be assigned, as available. Masks must continue to be worn inside the change rooms. Space is limited so alternate usage with your teammates as needed and maintain physical distancing at all times. Quickly change and exit the room and facility.
- If teams want to store items inside the dressing rooms, they may sign out a key from the Information Booth. Personal items can also be taken to your field and stored behind your bench area.

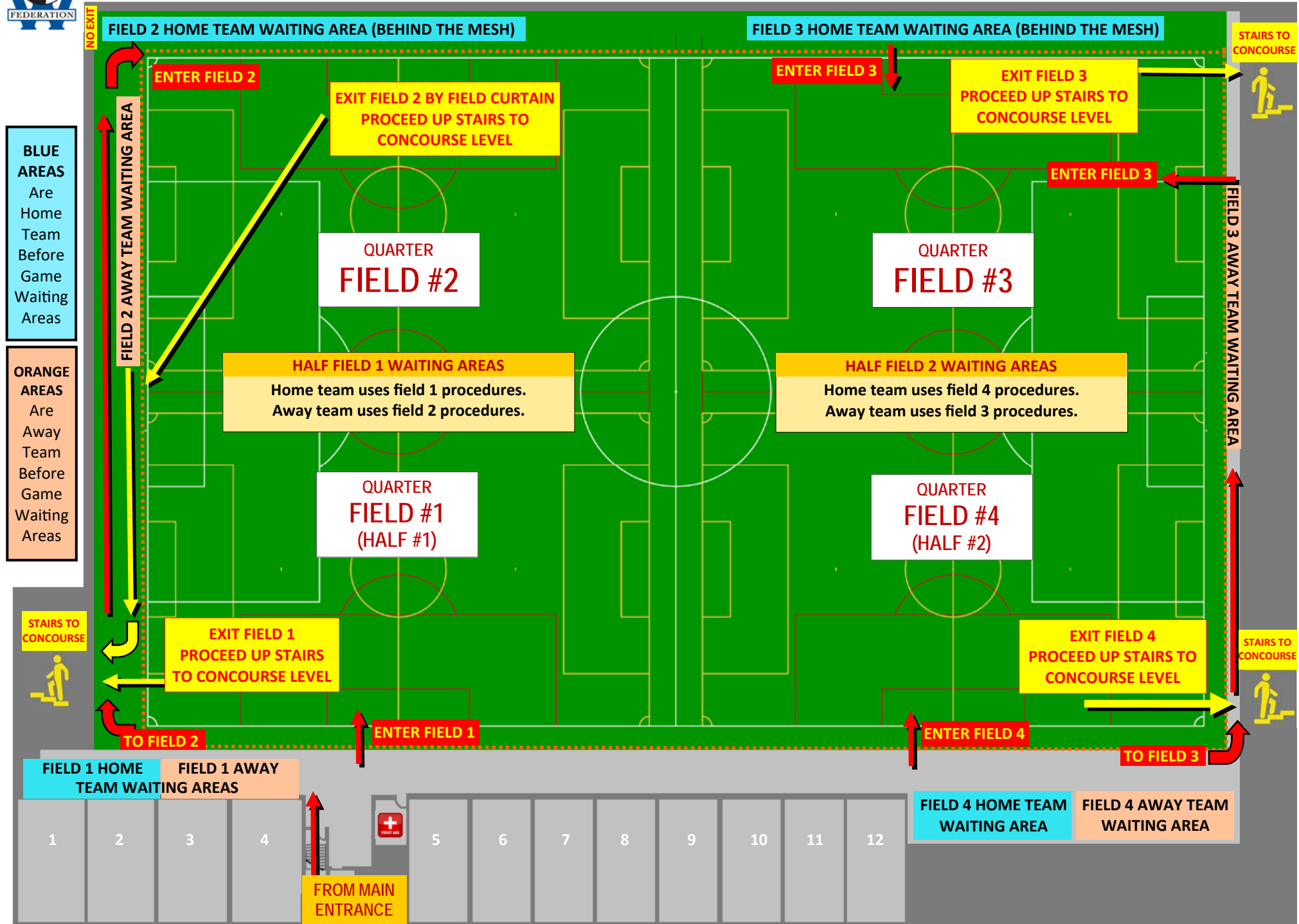
FIELD LEVEL ENTRANCE & EXIT: Review the attached facility maps for entrance and exit procedures.

ADHERANCE: All protocols set forth by the Province of Manitoba, WSF and MSA must be adhered to at all times. Non-adherence may result in immediate removal with no refund provided. Payment of COVID fines issued are the responsibility of the group or individual.



WSF SOCCER SOUTH FIELD LEVEL PROCEDURES

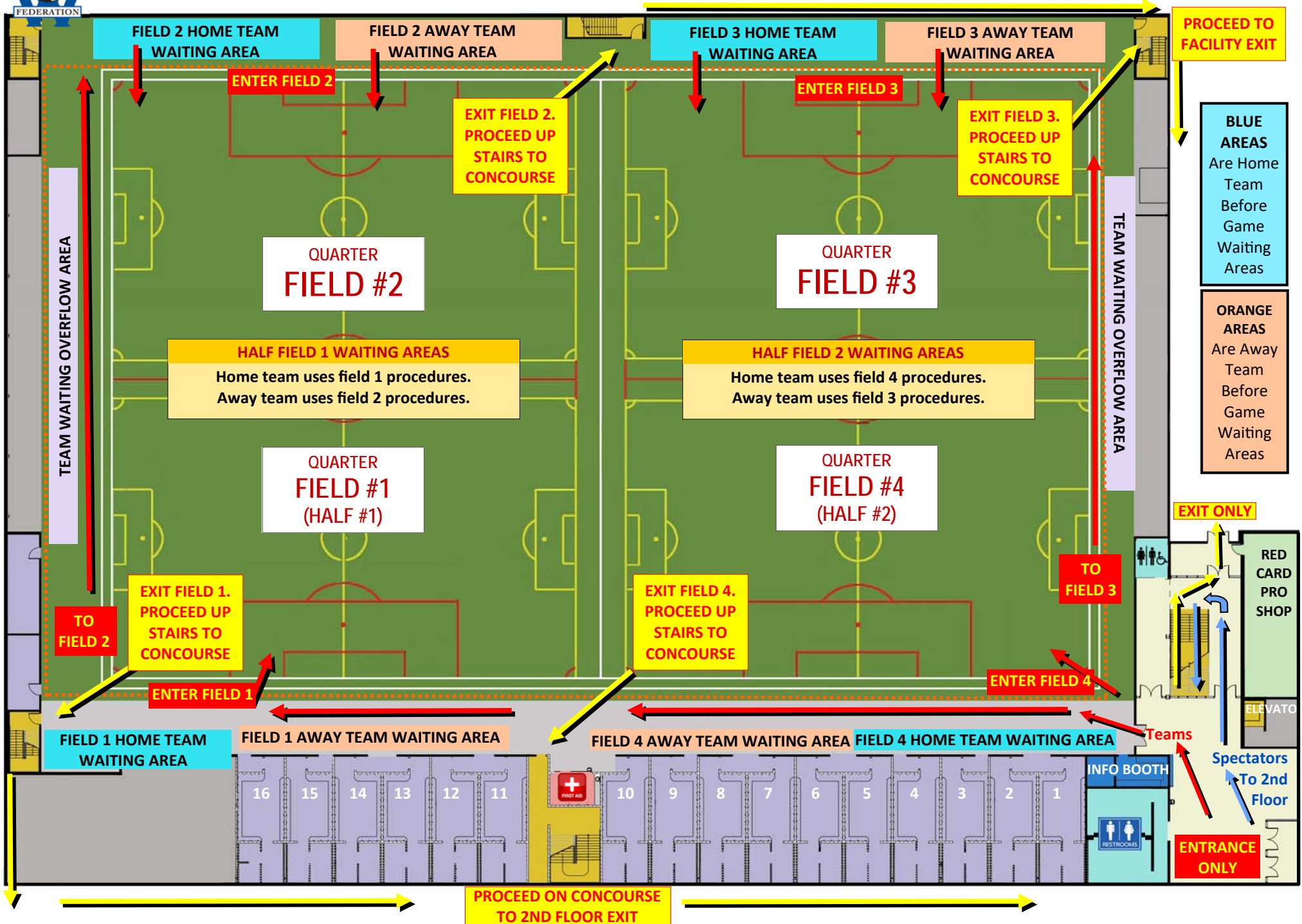
Location: 211 Chancellor Matheson Road (University of MB Campus)





WSF SOCCER NORTH FIELD LEVEL PROCEDURES

Location: 770 Leila Avenue (Garden City)



Manitoba Soccer Association Inc.

211 Chancellor Matheson Rd | Winnipeg, MB | R3T 1Z2
mbsoccer@manitobasoccer.ca | P: 204.594.5809 | F: 204.594.5139
www.manitobasoccer.ca



December 3, 2021

Dear MSA Members,

As indicated in previous correspondence we have been following the information trail with regards to the public health orders that come into effect on December 6, 2021, which will require youth aged 12 to 17 years attending indoor sporting and recreational facilities to provide proof that they have received at least one dose of the Pfizer-BioNTech or Moderna vaccine for COVID-19. Below is additional information from the provincial health authorities.

Participants, youth aged 12 to 17 years, who have not had at least one dose, must provide proof of a pharmacist-confirmed negative result from an approved rapid antigen test, from a test taken within the 72 hours before participation. The public health orders do not allow other health care providers to confirm a test result.

For clarification, approved rapid COVID-19 tests include (a) the Abbott PanBio COVID-19 antigen test; (b) the BD Veritor COVID-19 antigen test; and (c) any other test for COVID-19 approved by the chief provincial public health officer.

It is the responsibility of the facility operator (including public and independent schools) to ensure the public health orders are followed.

Required proof of vaccination/testing includes:

- Proof of full vaccination (required for those 18 and older) will require a government-issued immunization card that contains a QR code, as well as government-issued identification (driver's licences, provincial health cards, passports, status cards, permanent resident cards, citizenship cards, social insurance cards and birth certificates) or a school ID card to verify the youth's identity. Manitoba immunization cards can be requested on the government of Manitoba website at www.gov.mb.ca/covid19/vaccine/immunizationrecord/residents.html#immunization-cards or by calling 1-844-MAN-VACC (1-844-626-8222).
- Proof of a single dose of vaccination will require a printout or web view of the individual's government-issued immunization record as well as government-issued identification or a school ID card to verify the participant's identity. A printout or web view of proof of a single dose of vaccination is available by registering on the Shared Health website at <https://sharedhealthmb.ca/covid19/test-results/>

- Proof of a negative result from an approved rapid antigen test within the 72 hours before participation must be confirmed by a pharmacist and supported by government-issued identification or a school ID card to verify the youth's identity. The orders do not allow other health care providers to confirm a test result. Youth that choose testing should verify with their local pharmacy that test kits are available.

Participants choosing to test are responsible for purchasing the test. Families are encouraged to contact their local pharmacy to confirm if the pharmacy provides these tests. In addition, pharmacies set their own prices for the service, so people are encouraged to ask about the cost.

Youth subject to the orders who have been granted a medical exemption are not required to undergo testing. Only Manitoba Health and Seniors Care can approve medical exemptions.

Provincial COVID-19 testing sites are not to be used for testing pertaining to these orders. Provincial COVID-19 testing sites are for the testing of symptomatic individuals and individuals directed to be tested by public health officials.

If you would like to read the more detailed information about proof of vaccination, the scope of the orders, and how to collect and manage personal health information, please visit:

<https://www.gov.mb.ca/covid19/testing/testing-youth-indoor-sports.html>

Here are some other resources:

- [Fact sheet](#)
- [Sample](#) of a negative rapid antigen test from a pharmacy
- [Sample](#) of proof of a single dose record from Shared Health website

All other public health orders and guidance will continue to be followed.

Please take the necessary steps to comply with the requirements to ensure all participants continue to enjoy the sport.

Take care,



Héctor Vergara
Executive Director